



2020-2021 Delaware Dropout Summary



Prepared by:

Delaware Department of Education
401 Federal Street, Suite 2
Dover, Delaware 19901

Officers of the Department of Education

Mark A. Holodick, Secretary of Education

Cora Scott, Deputy Secretary

Emily Cunningham, Chief of Staff

Monica Gant, Associate Secretary, Academic Support

Caitlin Gleason, Associate Secretary, Early Childhood Support

Kim Klein, Associate Secretary, Operations Support

Luke Rhine, Associate Secretary, Workforce Support

Michael Rodriguez, Associate Secretary, Student Support

James Simmons, Director, Office of Equity and Innovation

Ensuring Confidentiality of Individual Student Data

The Delaware Department of Education (DDOE) values data transparency as well as security. DDOE complies with all federal and state data standards and laws, including the [Family Educational Rights and Privacy Act \(FERPA\)](#).

Individuals and organizations with access to DDOE data must have systems in place to ensure security, sign a memorandum of understanding and align their work with DDOE data security policies.

Executive Summary

The Delaware Department of Education (DDOE) report on dropouts is from data collected annually from all public schools including grades 7 through 12. DDOE calculates the yearly dropout rate from grades 9 through 12, as is prescribed by the National Center for Educational Statistics (NCES), which provides data to the federal reporting system.

In accordance with NCES requirements, Delaware uses the event dropout rate, which measures the proportion of students who drop out in a single school year. See Appendix A for additional details about the dropout calculation.

This report does not contain data reflecting private or home school students in Delaware. The State does gather information from families that home school their children and from private schools, but only does so to verify the transfer of a student from public to private and home schools.

Highlights

- Last year, out of 43,092 students enrolled in grades 9-12, 594 students left school.
- The statewide annual dropout rate for school year 2020-2021 was 1.4%. This is a slight increase from school year 2019-2020 when the dropout rate was 1.3%.
- Of the 594 dropouts, 66.3% were male and 33.7% were female.
- The largest number of dropouts were from students enrolled in the 9th grade (191 students). Students enrolled in 12th grade represented the lowest proportion of students who dropped out (113 students).
- Personal, Truancy and Groves/Job Corps were cited as primary reasons for dropped outs in school year 2020-2021.

Table 1
Dropout Summary Statistics
Dropout Rates of 9-12 Grade Students, School Years 2019-2021

	2018-2019			2019-2020			2020-2021		
	Total Students	Dropout Students	Dropout Rate	Total Students	Dropout Students	Dropout Rate	Total Students	Dropout Students	Dropout Rate
<u>State Average</u>	41,965	559	1.3%	42,734	560	1.3%	43,092	594	1.4%
<u>Gender</u>									
Female	20,546	203	1.0%	21,035	209	1.0%	21,444	200	0.9%
Male	21,419	356	1.7%	21,700	351	1.6%	21,648	394	1.8%
<u>Race/Ethnicity</u>									
African American	13,208	205	1.6%	13,276	205	1.5%	13,155	193	1.5%
Asian American	*	*	0.4%	*	*	0.2%	*	*	0.2%
Hispanic or Latino	6,832	152	2.2%	7,362	132	1.8%	7,521	188	2.5%
Multi-Racial	*	*	1.0%	*	*	1.0%	1,555	16	1.0%
Native American	*	*	1.3%	*	*	1.7%	*	*	1.7%
Native Hawaiian/Pacific Islander	49	0	0.0%	47	0	0.0%	*	*	0.0%
White	18,949	183	1.0%	18,684	201	1.1%	18,852	184	1.1%
<u>Age</u>									
Less than 15	*	*	0.0%	*	*	15.4%	*	*	15.4%
Age 15	*	*	0.1%	*	*	0.3%	*	*	0.3%
Age 16	10,206	17	0.2%	9,993	94	1.0%	10,643	42	0.4%
Age 17 and over	26,358	541	2.1%	28,182	448	1.6%	23,277	543	2.3%

*Information suppressed to protect student privacy.

Figure 1
Delaware Dropout Summary Statistics, 10 Year History

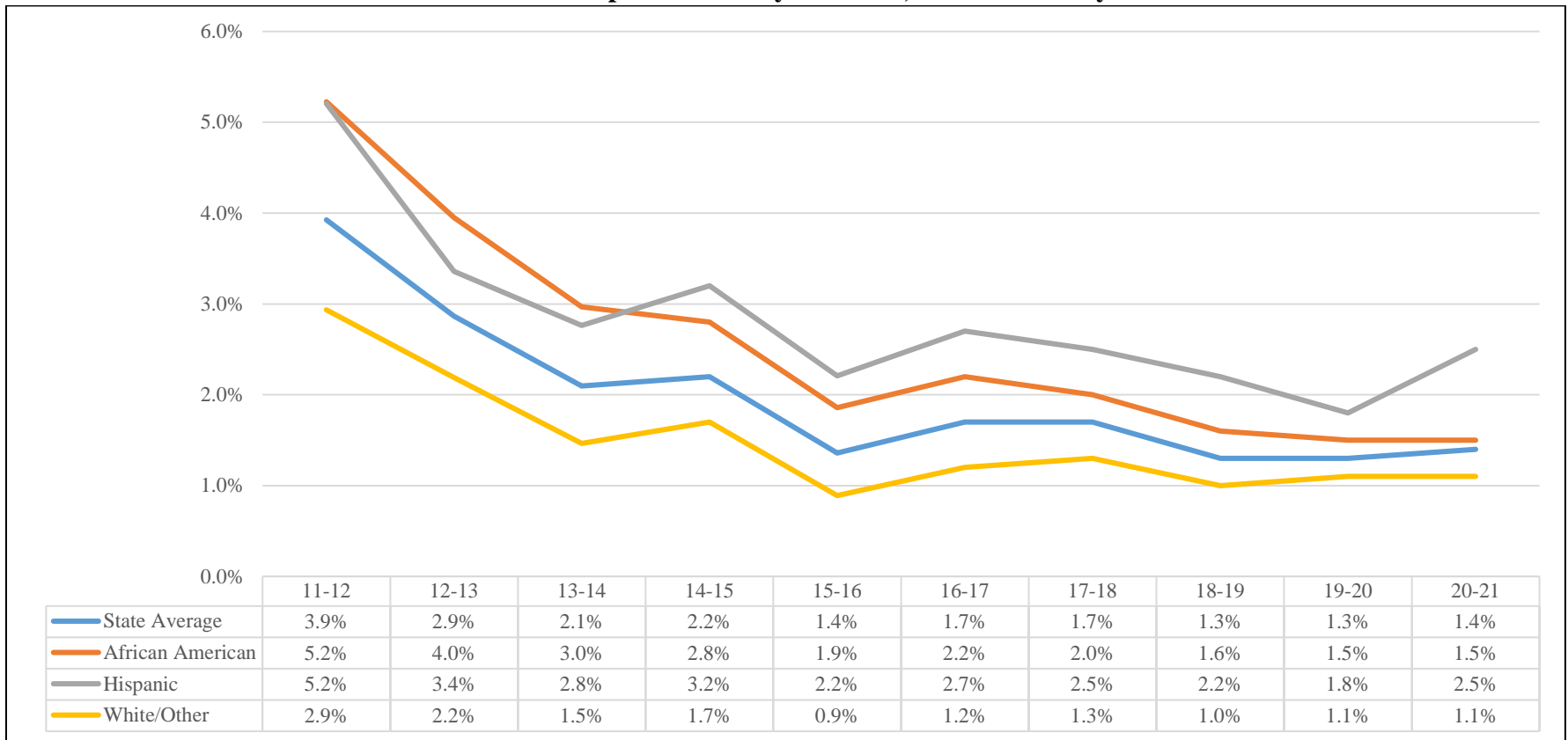


Table 2
Dropouts by Race and Grade, School Year 2020-2021

Grade	African American			Hispanic or Latino			White/Other			All		
	Total Students	Dropout Students	Dropout Rate	Total Students	Dropout Students	Dropout Rate	Total Students	Dropout Students	Dropout Rate	Total Students	Dropout Students	Dropout Rate
9	3,705	64	1.7%	2,255	67	3.0%	6,026	60	1.0%	11,986	191	1.6%
10	3,483	61	1.8%	1,991	60	3.0%	5,648	48	0.8%	11,122	169	1.5%
11	3,102	34	1.1%	1,662	33	2.0%	5,391	54	1.0%	10,155	121	1.2%
12	2,865	34	1.2%	1,613	28	1.7%	5,351	51	1.0%	9,829	113	1.1%
Total	13,155	193	1.5%	7,521	188	2.5%	22,416	213	1.0%	43,092	594	1.4%

Figure 2
Number of Dropouts by Race and Grade, School Year 2020-2021

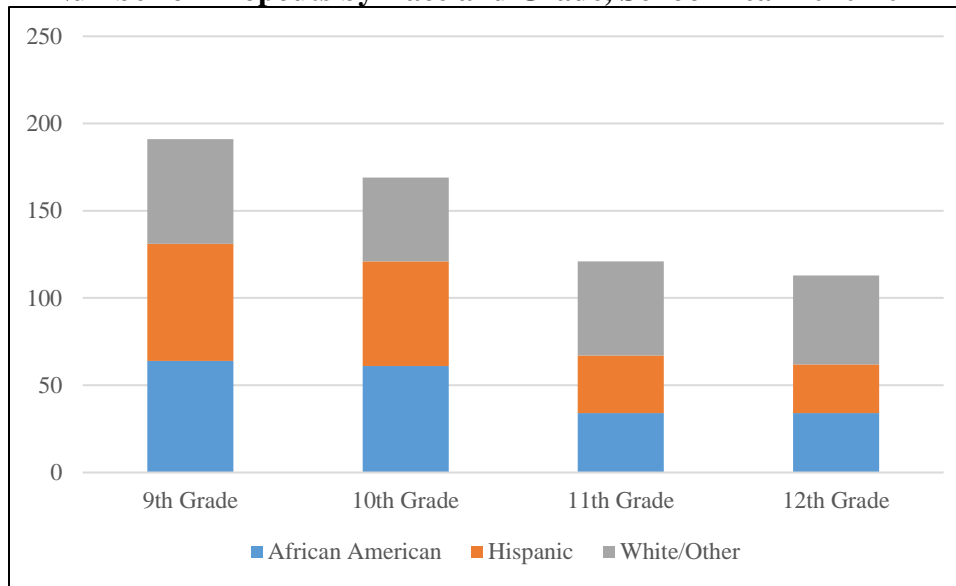


Table 3
Dropouts by Race and Gender, School Year 2020-2021

Gender	African American			Hispanic or Latino			White/Other			All		
	Total Students	Dropout Students	Dropout Rate	Total Students	Dropout Students	Dropout Rate	Total Students	Dropout Students	Dropout Rate	Total Students	Dropout Students	Dropout Rate
Male	6,609	65	1.0%	3,784	61	1.6%	11,051	74	0.7%	21,444	200	0.9%
Female	6,546	128	2.0%	3,737	127	3.4%	11,365	139	1.2%	21,648	394	1.8%
Total	13,155	193	1.5%	7,521	188	2.5%	22,416	213	1.0%	43,092	594	1.4%

Figure 3
Number of Dropouts by Race and Gender, School Year 2020-2021

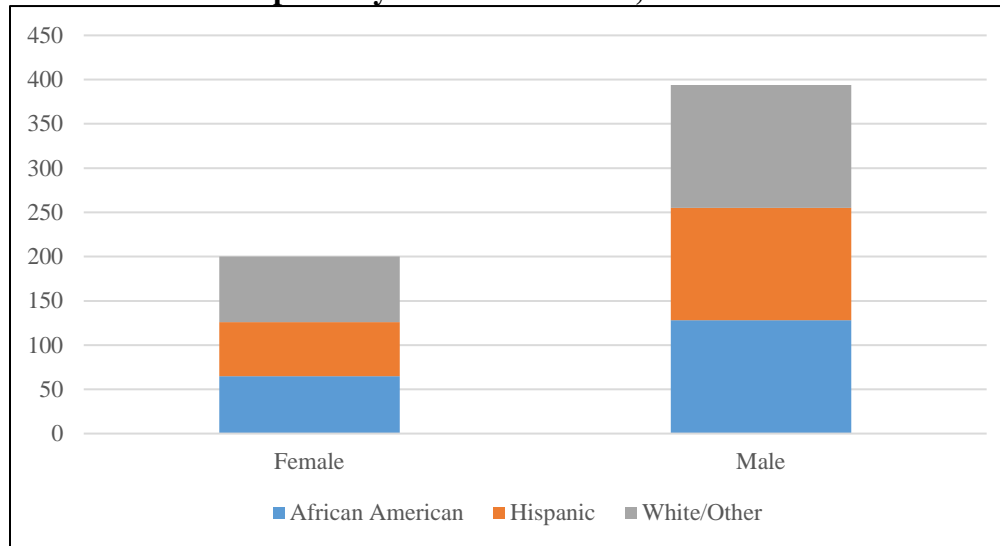


Table 4
Reasons for Dropping Out, School Year 2020-2021

Reason	Number	Percent
Academic-Related	22	3.7%
Economic-Related	55	9.3%
Groves/Job Corps	110	18.5%
Personal	111	18.7%
School/District Did Not Report Data	191	32.1%
Truancy	105	17.7%
Total	594	100%

Figure 4
Reasons for Dropping Out, School Year 2020-2021

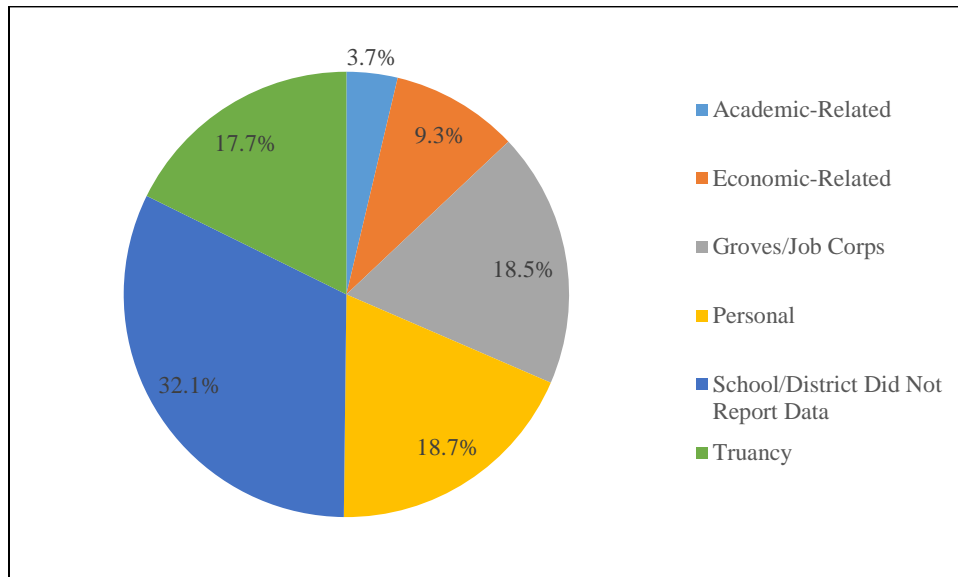


Table 5
Annual Dropout Rate by District/Charter, School Years 2019-2021

District/Charter	2018-2019 Dropout Rate	2019-2020 Dropout Rate	2020-2021 Dropout Rate
Appoquinimink School District	0.2%	0.2%	0.5%
Brandywine School District	1.7%	1.2%	0.3%
Caesar Rodney School District	0.9%	0.3%	1.0%
Cape Henlopen School District	1.8%	0.9%	0.8%
Capital School District	3.2%	3.7%	2.9%
Christina School District	1.6%	3.0%	4.2%
Colonial School District	1.3%	2.2%	1.6%
Delmar School District	1.5%	1.6%	0.9%
Early College High School at Del State	0.3%	1.0%	0.3%
First State Military Academy	2.1%	2.0%	2.6%
Freire Charter School Wilmington	0.3%	1.8%	0.5%
Great Oaks Charter School	0.0%	0.6%	5.4%
Indian River School District	2.7%	2.9%	3.1%
Lake Forest School District	1.2%	1.3%	2.2%
Laurel School District	3.7%	2.7%	1.2%
Milford School District	2.6%	1.5%	2.7%
MOT Charter School	0.0%	0.6%	0.4%
New Castle County Vocational-Technical School	0.3%	0.4%	0.1%
Newark Charter School	0.0%	0.0%	0.1%
Odyssey Charter School	0.0%	0.0%	0.0%
POLYTECH School District	0.2%	0.1%	0.3%
Positive Outcomes Charter School	3.5%	0.0%	2.3%
Red Clay Consolidated School District	1.6%	0.5%	1.6%
Seaford School District	2.5%	2.6%	2.1%
Smyrna School District	1.4%	1.6%	1.0%
Sussex Academy	0.0%	0.0%	0.0%
Sussex Technical School District	0.2%	1.0%	0.7%
Woodbridge School District	2.5%	2.0%	0.7%

Notes: • Red Clay Consolidated School District includes Charter School of Wilmington and Delaware Military Academy.
• Special Schools are included in district dropout summary statistics.

Table 6
Annual Dropout Rate by School, School Years 2019-2021

High Schools	18-19 Dropout Rate	19-20 Dropout Rate	20-21 Dropout Rate
Appoquinimink High School	0.1%	0.1%	0.2%
Brandywine High School	3.3%	1.2%	0.1%
Brennen School (The)	0.0%	0.0%	0.0%
Caesar Rodney High School	0.8%	0.2%	0.9%
Calloway (Cab) School of the Arts	0.0%	0.0%	0.2%
Cape Henlopen High School	1.8%	1.0%	0.8%
Charter School of Wilmington	0.0%	0.0%	0.0%
Christiana High School	2.7%	6.6%	4.1%
Concord High School	1.1%	0.9%	0.6%
Conrad Schools of Science	0.0%	0.0%	0.0%
Delaware Military Academy	0.2%	0.0%	0.2%
Delaware School for the Deaf School (DSD)	0.0%	0.0%	0.0%
Delcastle Technical High School	0.3%	0.6%	0.3%
Delmar High School	1.5%	1.6%	1.0%
Dickinson (John) School	5.9%	0.5%	6.2%
Dover High School	2.8%	2.8%	2.7%
duPont (Alexis I.) High School	3.0%	1.9%	2.1%
Early College High School at Del State	0.3%	1.0%	0.3%
Ennis (Howard T.) School	1.7%	1.8%	0.0%
First State Military Academy	2.3%	2.0%	2.6%
First State School	0.0%	9.1%	14.3%
Freire Charter School	0.3%	1.8%	0.5%
Glasgow High School	1.7%	3.5%	1.9%
Great Oaks Charter School	0.9%	0.6%	5.4%
Hodgson (Paul M.) Vocational Technical High School	0.5%	0.4%	0.3%
Howard High School of Technology	1.1%	0.8%	0.8%
Indian River High School	2.0%	1.9%	1.3%
John S. Charlton School	3.1%	2.0%	1.9%
Kent County Community School	3.6%	31.8%	4.3%
Kent County Secondary ILC	14.3%	26.3%	7.6%
Lake Forest High School	1.2%	1.3%	2.2%

High School	18-19 Dropout Rate	19-20 Dropout Rate	20-21 Dropout Rate
Laurel Senior High School	3.7%	2.7%	1.2%
Leach (John G.) School	0.0%	0.0%	0.0%
McKean (Thomas) High School	2.6%	0.7%	2.4%
Meadowood Program	0.0%	0.0%	0.0%
Middletown High School	0.2%	0.4%	0.8%
Milford Senior High School	2.6%	1.5%	2.7%
MOT Charter School	0.0%	0.6%	0.4%
Mount Pleasant High School	1.2%	1.5%	0.3%
Newark Charter School	0.0%	0.0%	0.1%
Newark High School	1.6%	1.4%	6.8%
Odyssey Charter School	0.0%	0.0%	0.0%
Penn (William) High School	1.1%	1.5%	1.7%
POLYTECH High School	0.2%	0.1%	0.3%
Positive Outcomes Charter School	3.5%	0.0%	2.3%
Seaford Senior High School	2.5%	2.7%	2.1%
Smyrna High School	1.4%	1.6%	1.0%
St. Georges Technical High School	0.0%	0.1%	0.0%
Sussex Academy	0.0%	0.0%	0.0%
Sussex Central High School	3.1%	3.5%	4.1%
Sussex Consortium	1.0%	0.0%	1.0%
Sussex Technical High School	0.4%	1.0%	0.7%
Wallace Wallin School	5.6%	16.1%	0.0%
Woodbridge High School	2.5%	2.0%	0.7%

Notes: • Special Schools are included in district dropout summary statistics.

Table 7
Students with Disabilities Dropout Summary Statistics, School Years 2019-2021

Race/Ethnicity	2018-2019			2019-2020			2020-2021		
	Total Enrolled	Total Dropout	Dropout Rate	Total Enrolled	Total Dropout	Dropout Rate	Total Enrolled	Total Dropout	Dropout Rate
African American	2,732	64	2.3%	2,837	56	2.0%	2,918	48	1.6%
Hispanic	973	15	1.5%	1,055	16	1.5%	1,116	19	1.7%
White/Other	2,909	56	1.9%	2,975	72	2.4%	3,073	61	2.0%
Total	6,614	135	2.0%	6,867	144	2.1%	7,107	128	1.8%

Figure 5
Students with Disabilities Dropout Summary Statistics, School Years 2019-2021

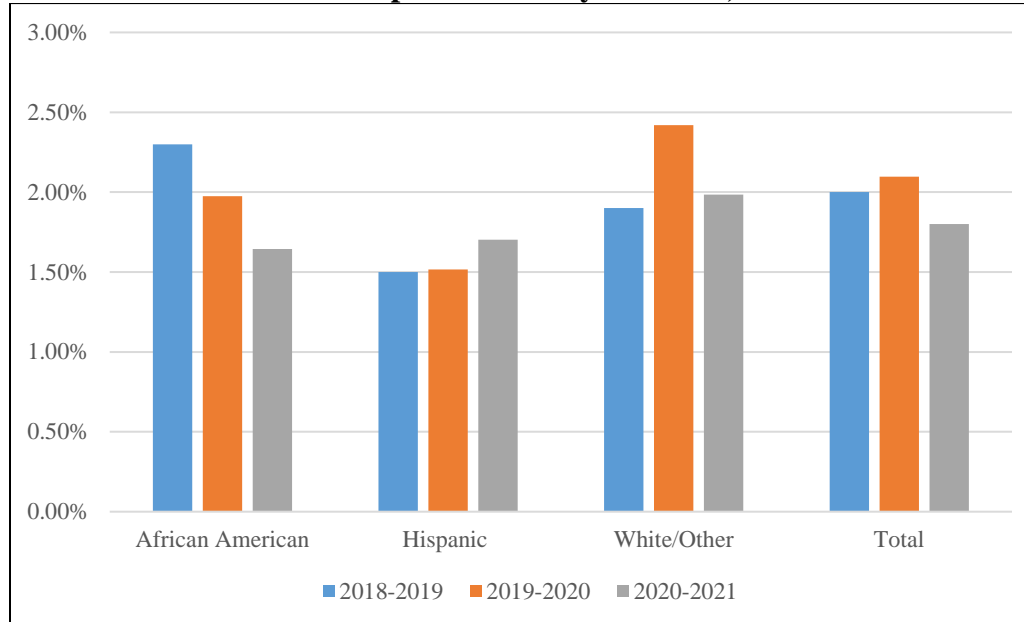
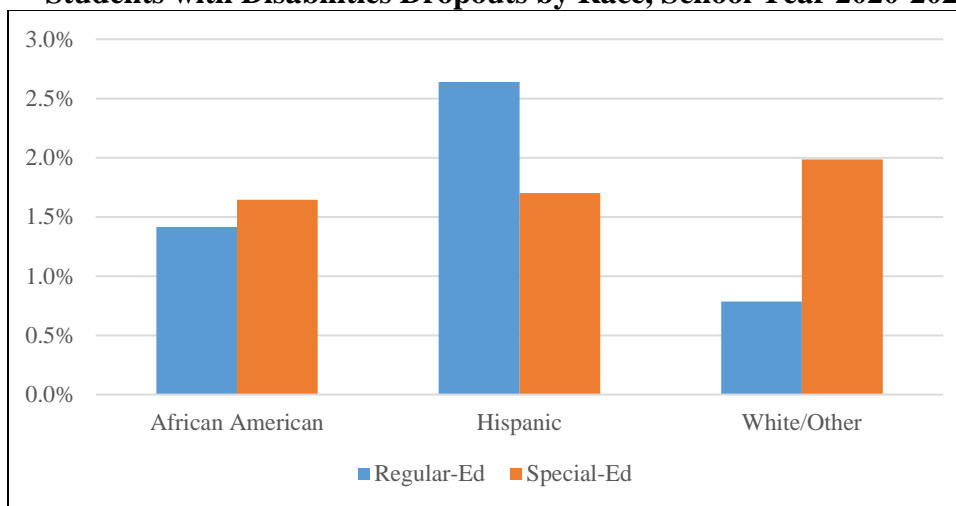


Table 8
Students with Disabilities Dropouts by Race, School Year 2020-2021

	African American			Hispanic or Latino			White/Other			All		
	Total Students	Dropout Students	Dropout Rate	Total Students	Dropout Students	Dropout Rate	Total Students	Dropout Students	Dropout Rate	Total Students	Dropout Students	Dropout Rate
Regular-Ed	10,237	145	1.4%	6,405	169	2.6%	19,343	152	0.8%	35,985	466	1.3%
Special-Ed	2,918	48	1.6%	1,116	19	1.7%	3,073	61	2.0%	7,107	128	1.8%
Total	13,155	193	1.5%	7,521	188	2.5%	22,416	213	1.0%	43,092	594	1.4%

Figure 6
Students with Disabilities Dropouts by Race, School Year 2020-2021



Appendix A

Criteria for being identified as a dropout:

- A student who completed the previous school year and who did not reach their 16th birthday by the beginning of the current school and did not attend any days of the current school year is considered dropout underage from the receiving school. This student should be coded in eSchoolPLUS as Dropout-Underage. This underage dropout should have a withdrawal date that is the same as the entry date (i.e., first day of school of the reporting year).
- A student who completed the previous school year and who did reach their 16th birthday by the beginning of the current school and did not attend any days of the current school year is considered dropout-truancy from the receiving school. This student should be coded in eSchoolPLUS as Dropout-Truancy. This dropout should have a withdrawal date that is the same as the entry date (i.e., first day of school of the reporting year).
- If a student has moved and there is no official documentation that he or she has transferred to another school, he or she is counted as a dropout and coded in eSchoolPLUS as DropoutUnderage or Dropout-Truancy depending on age.
- A student who transfers to James H. Groves Adult High School during the current school year and is not in attendance (enrolled) by September 30 of the next school year, is counted as Dropout-Academic from the home school.
- A student who transfers to James H. Groves Adult Basic Education (ABE) programs during the current school year is counted as Dropout-Academic from the home school.
- An expelled student is counted as a dropout if he or she does not return at the end of the disciplinary period. This student should be coded in eSchoolPLUS as Dropout-Behavior.
- A school leaver who has joined the military is counted as a dropout. This student should be coded in eSchoolPLUS as Dropout-Military.
- A school leaver who has joined Job Corps is counted as a dropout. This student should be coded in eSchoolPLUS as Dropout-Employment.
- A student withdrawn because of truancy is counted as a dropout. This student shall be coded in eSchoolPLUS as Dropout-Underage or Dropout- Truancy depending on age. (A student with an active truancy case with the Justice of the Peace Court shall not be withdrawn from eSchoolPLUS.)

Criteria for not being identified as a dropout:

- A student who remains enrolled in a public school in the State.
- A student who receives a diploma or in the case of a special education student a district or charter school issued certificate, or a diploma of alternate achievement standards should not be reported as a dropout.
- A student who transfers to another public or private school should not be reported as a dropout; documentation of transfer needs to be preserved.
- A student who moves out of state should not be reported as a dropout; documentation of the move needs to be preserved.
- A student who is deceased should not be reported as a dropout.
- A school leaver who is in a correctional institution or other state agency placement should not be counted as a dropout.
- A student who leaves the United States is not considered to be a dropout even if the school district cannot document the student's subsequent enrollment in school.